

Capresso coffee grinder 565 manual



File Name: Capresso coffee grinder 565 manual.pdf

Size: 2423 KB

Type: PDF, ePub, eBook

Category: Book

Uploaded: 13 May 2019, 17:47 PM

Rating: 4.6/5 from 550 votes.

Download Now!

Please check the box below to proceed.

I'm not a robot



reCAPTCHA
Privacy - Terms

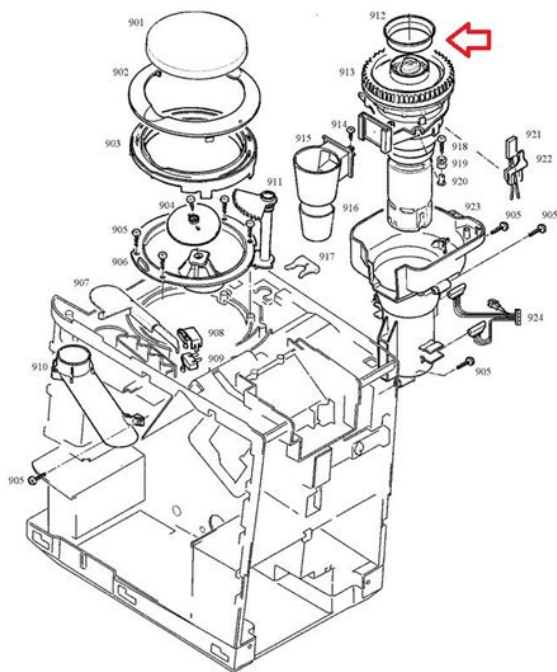
Book Descriptions:

Capresso coffee grinder 565 manual



Use handles or knobs. 3. To protect against fire, electric shock and injury to persons, do not immerse cord, plugs, or body of machine in water or other liquid. Please study these instructions carefully before using your new grinder. The slow grinding imparts minimal heat on the coffee thus pre serving maximum aroma. The safety lock mechanism prevents the grinder from grinding without the bean container in place. After grinding in the finest settings we highly recommend cleaning the grinding chamber Fig. When using GoldTone Filters use a somewhat coarser setting; when using Filter Paper try a finer setting. This warranty is in effect for one year from the date of the first consumer purchase and is limited to the United States of America. This warranty covers all defects in materials or workmanship parts and labor including UPS ground transportation for both ways, if necessary. Male Female Mail order Department Store. Use handles or knobs. 3. To protect against fire, electric shock and injury to persons, do not immerse cord, plugs, or body of machine in water or other liquid. 4. Close supervision is necessary when any appliance is used by or near children. 5. Unplug from outlet when not in use and before cleaning. Page 4 A Fig. 1 B A Bean Container Lid B Bean Container C Timer OnSwitch C D M AX D Ground Coffee Container E Max Line for Ground Coffee E Non Grinding Area Fig. 2 Fig. 3 4 Fig. Page 5 Upper Burr with Soft Collar Fig. 5 Fig. 4 Feeder Channel Fig. 6 Fig. 7 Fig. 8 CUSTOMER SERVICE Thank you for choosing this Capresso product. Please study these instructions carefully before using your new grinder. If you call at any other time please leave a message with your telephone number and when we can call you back. Page 6 1. WELCOME This Burr Grinder uses solid steel conical burrs and a high reduction motor to grind slowly and precisely from Turkish fine to French Press coarse. The slow grinding imparts minimal heat on the coffee thus preserving maximum aroma. <http://ertradingco.com/images/dynatech-nevada-235a-user-manual.xml>

- capresso burr grinder 565 manual, capresso burr grinder 565 parts, 1.0, capresso burr grinder 565 manual, capresso burr grinder 565 parts.



The safety lock mechanism prevents the grinder from grinding without the bean container in place. The removable upper burr makes cleaning easy. We are sure you will find the right fineness setting for your coffee application. Enjoy! 2. 1. 2. 3. Page 7 6. When grinding in the two or three finest settings for Turkish coffee only fill a few scoops of coffee beans into the bean container and check if the ground coffee passes through into the ground coffee container. Only grind the amount of coffee you will use for preparing coffee within the next hour. Ground coffee loses aroma and flavor very fast. When using GoldTone Filters use a somewhat coarser setting; when using Filter Paper try a finer setting. This warranty is in effect for one year from the date of the first consumer purchase and is limited to the United States of America. This warranty covers all defects in materials or workmanship parts and labor including UPS ground transportation for both ways, if necessary. Page 10 This page intentionally left blank 10 Page 11 Capresso Infinity Burr Grinder Product Registration Please complete this registration after you have used your grinder for a few days. Your information will help us to better serve you in the future. You may also register online at www.capresso.com Thank you for buying from CAPRESSO. Our payment security system encrypts your information during transmission. We don't share your credit card details with thirdparty sellers, and we don't sell your information to others. To hide it, choose Ship in Amazon packaging at checkout. Used Very GoodAccessories may have cosmetic damage. Item will come repackaged. Something we hope youll especially enjoy FBA items qualify for FREE Shipping and Amazon Prime. Learn more about the program. Please try again. Please try again. Show details Page 1 of 1 Start over Page 1 of 1 In order to navigate out of this carousel please use your heading shortcut key to navigate to the next or previous heading. <http://lzs.jaraczewo.pl/filesedytor/dynatech-nevada-454a-manual.xml>



Register a free business account Full content visible, double tap to read brief content. Please try your search again later. Sixteen different settings four each in the four categories of extra fine, fine, regular, and coarse let you adjust the grind to the specific blend of coffee and method of brewing. The finest setting is ideal for preparing Turkish coffee, which is a rare feature to find in a grinder. A built-in timer sets the grind for anywhere between 5 and 60 seconds so you can walk away without having to constantly press a button to continue the grinding process. The Infinity has an advanced conical burr design made of steel that is usually only found on commercial grinders. This burr design slows down the gears and reduces the amount of friction and heat to preserve coffee's flavor and aroma. The coffee container holds up to 4 ounces of grounds and remains sealed during grinding. For safety, the bean container also needs to be locked into place for the Infinity to operate. Also, for easy cleaning, the bean container and upper burr lift off so you can clean the grinding chamber with the included brush and wipe down the heavy-duty zinc diecast housing with a stainless steel finish. Tips for Use The Infinity Burr Grinder will only grind when the black dot on the bean container points to one of the fineness settings. Turn the timer and grinding starts instantly. Turning the bean container marking black dot outside of the fineness settings will stop the grinding immediately. Turning it back to the desired fineness will resume grinding as long as the timer is still running pulse grinding. Make sure the bean container is empty before removing it from the base otherwise beans will scatter around. Sixteen different settings four each in the four categories of extra fine, fine, regular, and coarse let you adjust the grind to the specific blend of coffee and method of brewing.

For easy cleaning, the bean container and upper burr lift off so you can clean the grinding chamber with the included brush and wipe down the heavy-duty zinc diecast housing. To calculate the overall star rating and percentage breakdown by star, we don't use a simple average. Instead, our system considers things like how recent a review is and if the reviewer bought the item on Amazon. It also analyzes reviews to verify trustworthiness. Please try again later. techhead 1.0 out of 5 stars That's all it has. upper end of medium setting grind, produces nearly espresso grind. Coarse grind is not coarse enough for french press. My biggest problem with this grinder, is that it traps almost 3 grams of powdered coffee, with about 100 grams of medium light coffee beans. To clean it out, you need to turn it over 6 pounds and brush and spank the powder out, every time you use it. Ridiculous! I used it once, that was enough for me. Perhaps the following issues are true of all grinders. Issue 1 If you grind many cups per day, this may not be an issue, but I only drink two cups worth and this grinder wastes about as much coffee as much as I brew. This is because a large amount gets trapped inside the grinder. Issue 2 It is made clear in the User Manual that the grinder must be cleaned every day or the large amount of coffee left in the grinder will become rancid. The issue is that it takes about 3

or 4 times as long to clean the grinder as it takes to grind the coffee. To get it clean enough to return, I had to take it to the garage and use my 150 PSI air hose to blow the grounds out of the many, many places it gets trapped. It is also clear from my use that the small chute that allows the ground coffee to move into the catch bin is highly prone to becoming clogged and must be cleared often. What I thought was going to be a quality grinder for years didn't last more than 2 weeks.



<https://www.thebiketube.com/acros-bosch-pof-400a-router-manual>

The first thing I noticed was how much grind was left behind that didn't make its way into the removable tray. It makes a mess and it's wasteful. The second thing I noticed is the parts started to deteriorate and rust within two weeks. I cleaned the grinder after each use including brushing them down. I did not throw the pieces into the sink and simply let them set in water. For the parts to look that bad so quick, the quality is terrible. I'd never buy another capresso product nor recommend it to anyone else. What can I say it works and it DOES have longevity. I use it every day for pourover coffee and once you dial it in you barely ever need to move the setting unless your spouse like mine uses it for french press then you have to remember to move it back and forth between yours and their settings. I can tell you after 9 years same grinder and buying a second for a vacation home as well as 2 others gifted there have been few if any problems associated with this grinder. It never gets stuck I don't use dark roasted beans. While the price has gone up in 9 years I'd still recommend and prefer the more expensive heavy steel version over the plastic body one it feels and sounds more solid and is therefore a tad bit quieter with a deeper sound than the plastic body. That being said, the burrs are exactly the same on both and they work the same. I don't clean it as often as it states you should, my fault but unlike the folks saying it holds too many grinds, I differ on that opinion. I would estimate less than a gram is on the burrs with a few if any broken pieces. To clear out the machine each use, give the knob an extra buzz or two. Very little falls. Also, the dot marker on the plastic bean hopper should line up with the dot on the machine to open it and reseal it. Other than that it is extremely simple to open up and brush off. To clean the plastic parts I use Cafiza in water, rinse and let air dry all day.

<http://completedetailspainting.com/images/c3502-manual.pdf>



Cafiza is like dishwasher detergent for coffee implements it works great on wine glasses!. Just dont forget how you took the thing apart take photos of its position and what it look likes as you remove each part so that you can put it back together. You do NOT have to force the plastic container back make sure it fits into the slot and align the two buttons the hopper will reseal easily then put the setting back to where it started. The only negative I can think of is that the printing that shows you the grind fineness does wear off after years of use. Mark your favorite spot with a permanent marker if this starts to happen. Looks nice in stainless, very quiet, and gives a consistent grind. There are a few nagging issues for me. I use a french press, requiring a course grind. Even at the most course setting I set it just where the grind mechanism engaged, to the right of all the marks, I find the grind just slightly too fine, wish there was a yet more course setting there. Its fine for french press though, not a deal breaker. This grinder is slow. I guess the idea is not to burn the beans, I understand that, but then they should have put in a longer timer. Our daily french press is for 3 mugs of coffee, requiring 5 bean scoops. Im setting the timer to 9 or so to grind all that. When we have guests, we brew the bigger press, requiring 7.5 scoops, which means Ill be having to turn the timer several times to grind all that. Again, not a deal breaker, but a bit of a hassle having to hover over the thing to get the task done. Finally, although as I said earlier, the unit looks very nice in stainless, why couldnt they also include a nice turn knob. Instead its cheap plastic, kind of takes away from it. In conclusion, good burr grinders are fairly expensive. This unit is not too expensive, its a pretty good grinder, but there are some drawbacks to it. I think its worth the cost.

<http://complexitycafe.com/images/c3501-user-manual.pdf>



Opening up the top shows that all the white plastic has been stained the colour of coffee, with bits of coffee dust everywhere, however the containers that came with it are new. I thought it might be factory testing, but that doesn't explain the usage evident on the machine. This is unacceptable and I will be returning it. The grinder seems to be well reviewed, so I will order another, and hopefully it will be a new one. Sorry, we failed to record your vote. Please try again Bitter Coffee Sorry, we failed to record your vote. Please try again This replacement works as well as the original. Our only complaint is that we were not able to just replace the plastic hopper. We were not able to find this part online anywhere just the grinding burrs and the timer. Sorry, we failed to record your vote. Please try again I had a limited budget, so it was a matter of balancing features vs. cost. I'm very happy with the outcome. It required some playing around to get the grind exactly right for my espresso machine which is why I'm giving it four stars instead of five, but this grinder has increased the quality of my daily shots. Caveat I make espresso and only espresso. This machine is brilliant for that. I have no idea how well it would work for anything else. Sorry, we failed to record your vote. Please try again It's solid, impressive, and using it to grind our beans gives us a cup of coffee in our Aeropress that far exceeds any we can buy in the specialty coffee shops. Every cup is perfect. The brew is consistent and we can each have a different blend. We live in a very dry area, so if we get static, we simply add a couple of drops of water to the beans before we grind. Problem solved. We hesitated at first because of the price, but it quickly pays for itself. The only downside is that we are drinking and enjoying more coffee than we used to. Sorry, we failed to record your vote. Please try again Only con is the ground coffee tends to get stuck in the chute which is hard to access.

It seems the best fix for that is to remember to thump on both sides of grinder with your hands simultaneously before removing the grounds container, otherwise the ground coffee that didn't fall out of the chute will end up falling out on your counter. We chose the stainless steel model which is fairly heavy and sleek, not too tall. We are pleased with the appearance and performance of the product so far, hope it lasts many years since it was a hefty price. Sorry, we failed to record your vote. Please try again Sorry, we failed to record your vote. Please try again It works magnificently for this purpose and we have fantastic freshly ground coffee every morning, midmorning and afternoon. We had a cheap grinder before and there is a huge difference in quality of grind. Sorry, we failed to record your vote. Please try again Totally disappointed. Grinder as Grinder is fine but Amazon customer service BIG MINUS Sorry, we failed to record your vote. Please try again Well build and quiet, it grinds coffee consistently with a variety of settings. It's filled with awesome sauce. Sorry, we failed to record your vote. Please try again No wonder this grinder is so well respected. Sorry, we failed to record your vote. Please try again Heavy quality construction and has been flawless operation. I can't believe I wasted so many years without a burr grinder! Sorry, we

failed to record your vote. Please try again I'm impressed! Sorry, we failed to record your vote. Please try again. You might not need every tool for every procedure. This device is medium sized, heavy, and has a stainless steel finish. The containers for the beans and coffee grinds are made of a clear plastic. The top bean container's capacity is 8.8 oz and the ground coffee container's capacity is 4 oz. This device also has sixteen grind settings, composed of four categories that each have four settings. These settings vary from Turkish fine to very coarse, and the builtin timer sets the grind between 5 and 60 seconds.

<http://www.bestlifepolicy.co.uk/wp-content/plugins/formcraft/file-upload/server/content/files/16272bc9020770---breville-whole-fruit-juicer-manual.pdf>

Just enter your email address to download the guide today. Download Now We respect your privacy and you can unsubscribe at any time. Get our FREE Coffee Lover Newsletter Sign up for a free newsletter to help you brew amazing coffee at home. CLICK HERE to subscribe to our weekly emails on finding and brewing amazing coffee. The entrylevel electric coffee grinder market is fairly competitive, so it can be difficult to decide which machine is best for you. Here, we'll be reviewing the Capresso Burr Grinder lineup, including the Infinity, Infinity Plus, and even the baselevel Coffee Burr Grinder. At A Glance Our Top 3 Picks for Capresso Burr Grinder Infinity Plus Conical Burr Grinder Our Top Pick Infinity Conical Burr Grinder Coffee Burr Grinder Quick Summary The Best Capresso Burr Grinders Just so you know, if you click on a product on RoastyCoffee.com and decide to buy it, we may earn a small commission. You'll see who we think they're best suited for plus some alternative options in case you want to continue your search. Capresso Overview Capresso is a Swissbased company that mainly makes mid to highend espresso machines, grinders, coffeemakers, frothers, and water kettles. The name is a mix of "cappuccino" and "espresso," and serves as the company's inspiration as innovators. Furthermore, they were founded in 1994 and are owned by Jura Inc, so they're still relatively new to the coffee scene. Their products are aimed primarily at the American market. It has 16 settings, divided into 4 categories with 4 steps each extra fine, fine, regular, and coarse. The extremes are advertised as being appropriate for Turkish to Percolator brewing. The settings are easy to understand and change, so you won't have to worry about the confusion of continuous brewing or be overwhelmed by an exorbitant number of options. Additionally, this particular model as haveduty zinc diecast housing, as opposed to the ABS housing of the other Plus models.

<http://batterseataxi.com/survey/userfiles/files/8-inch-manual-damper.pdf>

Furthermore, all Infinity Plus models are equipped with a safety lock system to ensure your safety during and after use. There is an autooff feature that engages when the bean container is not locked as well. Lastly, this machine is touted as the "lowest noise grinder on the market," which it actually lives up to pretty well. Again, you can get a discounted price for the ABS model 570.01 . It has the same number of grind settings and other than the weight, dimensions, and housing, the models are essentially identical. The only really difference between the two models is the weight and capacity. The 565 is a pound lighter than the Plus versions for both the stainless steel and plastic models. Additionally, it is about an inch shorter. With the smaller, lighter profile comes slighter less capacity in the bean hopper. While the plus can hold 11 ounces of whole beans, the nonplus models hold 8.8 ounces. However, they hold the same amount of ground coffee in the grounds container 4 ounces. You can get the lighter, stainless finish or black 560.04 or 560.01 models for a little cheaper if you are willing to compromise on the build materials and noise level. Unfortunately, with a big step down in price comes a pretty big step down in features and functionality. While the other Capresso grinders do have some safeguards against static, this one definitely does not. The overall look of the machine is a bit cheap and plastic, which is typical of this price point. It only has 9 grind settings to work with and the timer comes in the form of a little slider, which controiutes to the plasticity toy look of it. Additionally, it's significantly louder than the other machines. However, to this machine's

credit, the 1st, most fine setting is actually more consistent than the finest setting on the Infinity models. And it's still appropriate to use for a pressurized portafilter. So if that's all you need, then this machine could work for you.

Nonetheless, we wouldn't recommend going for this machine. You can get a better quality and range of grinds with a manual grinder if money is your concern. Plus, you'll expend just as much effort contending with the static on this machine as you would actually grinding with another tool.

Capresso Blade Grinder. Cool Grind Pro Yes, Capresso, like most brands that want to offer a broader price range on grinders, does have a Blade Grinder. It's called the Cool Grind Pro and is pretty standard as far as blade grinders go. It has stainless steel grinding blades and a 3.5 ounce grounds capacity. It's pulse operated and has a clear seethrough safety lid so you can monitor your grind as you go. Capresso is a little more upfront about the limitations of this blade grinder than other brands are about theirs. They recommend pulsing in 23 second intervals and going for a total of 810 seconds for a coarse grind and 1015 seconds for a medium grind. However, they do state that you shouldn't use this machine for finer grinds as it cannot achieve the same uniformity as a burr grinder. Blade vs Burr The Cool Grind Pro is the perfect example of why we recommend avoiding blade grinders. It's about the same price as a good manual grinder, so it's surprisingly cheap for an electric grinder. But with that price point comes some serious compromises on quality. Blade grinders function much like blenders or helicopter blades, they might be great for smoothies or flying, but they are hot garbage when it comes to grinding coffee. Also, while the pricing puts these machines in entrylevel ranges, the method of grinding is actually rather difficult. You have to use a pulse function to gradually grind your beans until you visually identify them as the correct grind size. This can be extremely difficult for a beginner and even a relatively experienced barista due to inconsistency issues.

However, the Cool Grind Pro is also advertised as being viable for herb and spice processing, so perhaps it could have more success there where the exact size and consistency of the grind is less important. Common Features Warranty All of these Capresso grinders come with a 1year limited warranty. This covers any issues you might experience with defective materials or workmanship. However, it does not cover damage caused by the user through accident, abuse, negligence, misuse, or improper maintenance. LowNoise Some of the models listed above are advertised as being the "lowest noise grinder on the market." Nonetheless, even the ones that do not receive this label are marked as "extremely low" or "best in class" noise. Which is true as far as electric grinders are concerned. If noise is a serious issue for your household, we recommend going with a manual grinder, as these will be the quietest option. Pulse Grinding Pulse grinding allows you to achieve grind levels between or beyond the preset ones. All of the models except the 591.05 have this feature. However, it's not all that convenient or practical to use. So if you want more grind options, it would be better to look into other machines rather than trying to pulse to perfection with these. Steel Burrs Both the Infinity and Infinity Plus models have commercial grade conical steel burr grinders. This is pretty good, though they will wear down over time and need to be replaced, unlike ceramic ones. However, the steel means they are more durable overall, so there's less chance of them getting broken or chipped. Miscellaneous Lastly, Capresso's grinders all have separate on and off switches as well as an adjustable timer. The latter allows you to control the volume of the coffee being ground. The former is simply for convenience. Capresso Infinity Grinders Review Grind Consistency For the Infinity and Infinity Plus models, the grind consistency hits about the same mark as other entry level machines.

At the coarser end, it isn't great. And because this machine doesn't have a ton of settings the coarse grinds that are consistent might not work super well for a French press. On the other side of things, the finest end is decently consistent, though not perfect. However, it isn't quite fine enough for an espresso machine without a pressurize portafilter. Meaning there's no way you are going to get to

the advertised Turkish grind setting with this machine. However, the middle range can pull off grinding for a drip brewer or pour over, rather well. So if those are your goals, you'll have no issue with the grind consistency on this machine. Ease of Use The ease of use for the Capresso grinders is a mixed bag. They're incredibly easy to figure out, even for an absolute beginner. With the 16, clearly labeled grinding steps, it's pretty easy to deduce which one to choose. Starting and stopping is also a breeze. So it takes a bit of guesswork to puzzle that out. Also, cleaning could be easier. Due to the plastic components, there's a good bit of static to contend with when cleaning, so you'll need a good brush to get all the bits out. And the brush the machine comes with really doesn't cut it. Overall though, those issues aren't that major. You won't have to deal with it spewing grounds on your counter if you press the wrong thing, and you won't have to waste a ton of beans trying to figure out which grind size to use. Build Quality While we generally prefer stainless steel, the plastic models in this line are still pretty durable. The die cast housing on the more expensive models is also great on that front. Overall, you can count on these machines lasting you a good few years without needing to replace any parts. And, it's unlikely that you'll need to use the warranty. Noise Level These grinders are pretty quiet for electric grinder. The Infinity models easily beat out the very popular Baratza Encore as far as noise is concerned.

However, even the quietest model will still be about the same volume as a typical conversation. But, to be fair, that's about as quiet as you are going to get with a electric grinder. So if you'd be worried about having a phone call in your kitchen while your housemates are sleeping, running these grinders isn't going to be much better. However, if the bedrooms are across the house, and a regular conversation wouldn't wake anyone, then these will do just fine. If you really need something that's almost silent, go for a manual grinder. It's in the same price range as the Capresso Infinity models and offers similar functionality. It has more grind options 40 to be exact though, like the Capresso machines, the extreme end of the coarseness settings gets pretty inconsistent. However, we think this one gives a better grind if you're working with a French press. And it's completely non viable for Turkish coffee. Additionally, this machine is a bit louder than the stainless steel Capresso models. Lastly, there is less room in the bean hopper 8 oz but more in the grounds bin 5 oz. It beats out most of them in price, but it does have less grinding options 12 instead of 16. However, the Bistro can still run the gambit from pressurized portafilter espresso to French press. It holds slightly less in the bean hopper 7.75 ounces. Nonetheless, the Bistro actually has an interesting nonstatic feature and nice, rubber seals at the edges so you won't have to worry about it getting messy. Something Different For Experts Breville Smart Grinder Pro Now, if you are looking for something that isn't so similar, we do still have some other recommendations for you to try out. If you're on the market for a professional level machine that can grind for your high quality espresso machine, then you should check out the Breville Smart Grinder Pro. Plus, it has a plethora of other really handy features that are easy to access.

It has 60 preset grind settings which are sufficient for most users as well as 10 settings you can manually adjust on the burrs themselves totally about 600 total settings for the truly nitpick experimenters out there. For Manual Grinding JavaPress Conical Burr Grinder On the other hand, if you are still concerned about noise, aren't super into electric grinders as a whole, or are on a really tight budget, give the JavaPress Conical Burr grinder a shot. It has more settings than the Infinity or Bistro models with 18 steps. Also, the burrs are ceramic, so they won't wear down as easily over time. And for the housemates that really need their beauty sleep, the JavaPress is about 90% quieter than most electric grinders. You can also skip both the Coffee Burr Grinder and Cool Grinder Pro in your search for the perfect grinder. So where does that leave us. Is it the most impressive entry level grinder we've seen No. Will it get the job done Yeah. The Infinity and Infinity Plus are both competitive models for the entry level coffee grinder market and are about on par with the Bodum Bistro Pro. While we'd still probably opt for the Baratza Encore, the decreased noise level is likely a consideration that could make these machines better for your household. Happy

Caffeinating. Recommended Reading Zojirushi Review Travel Mug That Keeps Coffee TOO hot A trusted travel mug is always valuable to any coffee lover because you can take your brew on the go. Check out our review of the Zojirushi. Best Milk Frothing Pitcher for Latte Art Choose Your Level Searching for the best milk frothing pitcher for latte art to see your foam dreams come to life. Check out the pros and cons of our favorite products with tips on how to make foam designs on top of your espresso. Cuisinart SS10 A Potential Keurig Conquerer. In recent years, the world of singleserve pod brewers has become increasingly more competitive and complex. But we have you covered.

<http://schlammatlas.de/en/node/17730>